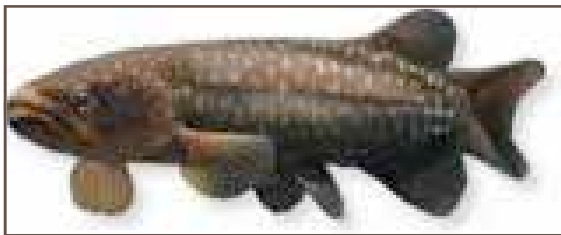


27th May 2011 An incredible place to visit. Will recommend to friends and family. Wendy and Neville

Welcome

Kiwi North is a place that attracts many volunteers who use the Park to express themselves and display their talents in a multitude of ways that ultimately benefit all users of the Park. There are so many Club activities underway that the Park feels positively reinvigorated.

The upcoming **Conservation Live Day on Sunday 11th September 2011** is shaping up to be vibrant featuring the not-often-seen giant kokopu, New Zealand's largest fresh water fish.



Music performances, dramatised story telling and informative talks based around **Conservation Week's "Love New Zealand"** theme add to the excitement. Northland Regional Council, Department Of Conservation and Mahurangi Technical Institute have all come on board to help tell our unique environmental story. As usual the Heritage Park Clubs will join in the Live Day Fun.

Up-coming Events & Exhibitions

Saturday 20th August-Exhibition **Kiwiana Top 10**
-Featuring items from the museum collection
-Rugby World Cup exhibition
-on going

Tuesday 13th September-Exhibition **Square Compasses**
-Freemasons National Touring exhibition
Closes 2nd December

Sunday 11th September - Event

Conservation Live Day

Love New Zealand Arohaina i a Aotearoa

Winter hours 10am - 3pm

Summer hours 10am - 4pm



» For full details please visit:
www.nrc.govt.nz/citylinknews

NORTHLAND
REGIONAL
COUNCIL

Don't miss the Kiwi North, Heritage Park big trains and NRC CityLink buses school holiday special this July.



Northern Business Expo

May 6th-7th 2011

Allie Fry-Kewene and Pippa Lawlor attended the **Northern Business Expo** at ASB stadium to promote Kiwi North as a destination venue to local businesses in Whangarei. It was a very full couple of days – over 160

home-baked Kiwi North biscuits and information packs were handed out with the assistance of Board members John Williamson and Robin Lieffering on the Friday and Saturday respectively.

Taking the coffee machine was an inspired idea as it attracted many people to the stand. Irene Hamlin and Pippa Lawlor had worked together to create a stunning banner to promote Kiwi North together with new business leaflets. *(See back page)* Kiwi North was fortunate to have been sponsored for the stand at the Expo.

The hard work is already paying dividends, with more businesses booking their Christmas parties and staff events at Kiwi North as a result of our raised profile within the business community.





Welcome to our fabulous new shop!

Beautiful gifts for all at Kiwi North

Our shop is looking really fantastic with lots of new and colourful stock. We have a large range of gifts including postcards, tea towels, tee shirts, hats, baby gifts, toys and jewellery. We have just taken delivery of some gorgeous new children's books and these make convenient presents to post overseas or for the children here at home. Beautifully illustrated, many are both educational and fun. We also stock a range of kiwiana board games that can be enjoyed by the whole family.

Friends of Kiwi North, don't forget as part of your membership you are eligible for a 10% discount in the gift shop!

Everyone is welcome to come and have a browse – lovely gifts for both tourists and locals.



Education Centre

Top Art Exhibition

Over a hundred High School students from all over the Whangarei District have flocked to the inspirational NZQA Top Art exhibition. Top Art is a touring art exhibition which annually features selected portfolios from students throughout New Zealand who achieved Excellence at Level 3. Featured works include sculpture, painting, printmaking, photography and design.

THE WHANGAREI REPORT, Thursday, June 23, 2011



KG150611RPTKIWINRTH
CREATIVE CRITICS: From left, Kendyl Bird, Indy Herman, Aleisha McNabb and Victoria Wong look at the design work by artist Olivia Vallance.

Top Art at Kiwi North

Students from Whangarei high schools checked out the annual NZQA Top Art exhibition on display at Kiwi North, Heritage Park.

The exhibition featured visual art portfolios of around 50 students nationwide, who achieved Excellence at level 3 in 2010.

An art design portfolio by

Whangarei Girls' High School graduate Olivia Vallance was the only work from Whangarei on display.

Other featured works included sculpture, painting, printmaking, and photography.

Thirty-three schools, museums, and galleries throughout New Zealand hosted the exhibition.

The photograph shows Whangarei Girls' High School students From left to right: Kendyl Bird, Indy Herman, Aleisha McNabb, Victoria Wong admiring a featured display from former student Olivia Vallance.

"Together Everyone Achieves More"

Friends of Kiwi North and volunteers met for morning tea on Monday 20th June to celebrate Volunteer Week.

Morning Tea was an opportunity for Kiwi North to say a big "thank you" to all the supporters and treat them to a delicious spread.

Allie Fry-Kewene (Visitor Services) and Pippa Lawlor (Education) hosted the event in the Education Centre and visitors enjoyed a behind-the-scenes tour of the Transport Collection, which is not normally on public display.



Volunteers and Friends enjoying morning tea

One of our long-standing volunteers, Jean Dufty, celebrated her 80th birthday on the same day. Jean is responsible for maintaining the grounds and lawns at Kiwi North and it's her hard work that keeps the premises looking beautiful all year round.



Allie Fry-Kewene & Jean Dufty

Kiwi North Volunteers

- Kiwi Hosts – share your interest in our native birds with visitors.
- Kiwi Observers – observe kiwi behaviour, contribute to scientific understanding and assist in light husbandry duties.

Kiwi North is a 7 day operation and we are looking for someone who can commit one day per week between the hours of 10am-12pm and/or 12pm-2pm. We ask for a commitment of at least three months.

For more information about volunteering or to have an application form posted to you, please email admin@kiwinorth.co.nz or phone (09) 438 9630.

For booking information, questions or comments email us at admin@kiwinorth.co.nz

Kiwi North has a large number of volunteers who do everything from delving in the archives to pest control on the 25 ha property.



Traps donated from the NRC for pest control

Like many not-for-profit organizations Kiwi North relies on the kind hearts and strong elbow work of its volunteers especially when running popular public events such as Live Days – and there’s always room for more!

International Museums Free Week

18th May 2011

It has been great to host so many children from Maunu School, which took advantage of the **Museums Free Week** to bring most of the classes over to the Museum. Five senior classes studying the Middle Ages spent an exhilarating day firing the trebuchet, trailing Robin Hood, making medieval medicine and banqueting like kings (or peasants)! No peacocks were injured in the preparation of the feast. A stalwart team of volunteers were on hand to deal with any revolting peasants: Shane Ace engineered the trebuchet, Jean-Luc Lawlor demonstrated correct techniques for storming a castle and the education team of Anne Juddery and Pippa Lawlor taught over 150 children the finer points of life in the Middle Ages including how to ward off smelly neighbours, entertain a troubadour and dance a courtly pavane.

Medieval Live Day

Talisha Buckingham was one of the lucky prize winners in our recent Medieval Madness Live Day.

Talisha successfully completed the answers to the “Robin Hood Trail” which was throughout Heritage Park.



There were a number of different competitions with the children’s fancy dress proving a popular choice.



The Monks and Maidens race was fiercely contested and hundreds of people joined in the Live Day fun.

Matariki 2011

The theme for Matariki 2011 at Kiwi North is “Eels and Ancestors”. A wonderful Exhibition combining Maori taonga and natural history has been created entirely in-house, curated by Anne Juddery and Karel Kaio.



PARK OVER PROPERTY

We welcome members of the POP organisation for a maximum of three nights - \$15 per night. Dogs are welcome but must be kept on a leash. Gates are locked between 4.30 pm and 9am. Toilets and showers are available.

For more information and enquires about booking Contact Allie. Phone 09 438 9630 Email admin@kiwinorth.co.nz



Become a Friend of Kiwi North

Did you know?

For the cost of just **TWO VISITS**

You can enjoy

Unlimited Visits to Kiwi North

FREE ENTRY on Live Days

Quarterly Newsletters

For further details:

Phone:09 438 9630 Email:admin@kiwinorth.co.nz



To mark the opening of the exhibition a special community event was held on June 11th. Visitors gathering for the dawn ceremony were serendipitously welcomed with



the cry of a kiwi from the nearby Bird Recovery Centre, marking the start of what turned out to be a very special day for Kiwi North.

Thanks to funding from WDC Creative Communities and AK Franks Charitable Trusts we were able to have artists and crafts people demonstrating their skills and expertise to visitors throughout the day. Music and performance helped to create a vibrant and lively atmosphere in the Museum and attracted many families to the event.



Kiwi House Husbandry

Exciting things have been happening in our brand new Kiwi House! Our resident male kiwi, Manuiti, has been joined by a lovely



Kura being weighted by vet Bruce Pickford

new female called Kura. Kura has come up from Hokitika on the West Coast and has settled in well.

Gerry Brackenbury recently attended the National Kiwi Hui near Napier, where, over two days, expert speakers gave presentations on the threats to kiwi, DNA research and kiwi restoration programmes around the country. Kiwi in the wild are still under threat from the usual suspects of stoats, cats, possums and uncontrolled dogs. Technology is moving on and new mechanical models are being developed for kiwi listening and possum destruction.

Students from Mangakahia Area School and Bream Bay College have been helping out in the



Bream Bay College Student

Michaela Miller helping out in the Kiwi House

Kiwi House and around the Park planting trees, collecting leaf litter and old logs for the kiwi and looking after our long-finned eels, here for the duration of the Matariki celebrations at the Museum.

Finally, husbandry staff have been talking to the Mangakahia Lions with regard to building a composting structure to create a worm farm.

VENUE HIRE — Weddings

The magnificent grounds, historic buildings, unique photographic opportunities and friendly, relaxed atmosphere of Heritage Park provide the perfect place for your wedding. Your family and guests will enjoy



Courtesy of www.meganbowers.co.nz

wandering the beautiful grounds.

We offer a stunning ceremony and / or photographic venue with mature parkland, native bush and a village green. Distant views of Whangarei Heads and heritage buildings provide extraordinary photo opportunities.

The Clarke Homestead, an octagonal kauri chapel, school house, rustic blacksmiths shop, railways and even a jail house are a photographers dream.

Contact Allie to arrange a visit and bookings.

Email admin@kiwinorth.co.nz

Ph. 09 4389630

Kiwi North is on Facebook!

<http://www.facebook.com/pages/Kiwi-North/108826625820626> will link you to our news site. Find out what we were up to for Seaweek and see our fabulous Monarch butterfly photos.

<http://www.facebook.com/pages/Kiwi-North/279829317243> Will link you to our captive kiwi resource site. Lots of pictures about kiwi- great for projects! See how we microchip kiwi that come into bird recovery before they are released back into the wild. Check out our films on You-Tube. Look for "Raiders of the Lost Archives" and see behind-the-scenes as we prepare specimens for exhibitions. Manuiti is also on Twitter!

Find us on Facebook

Follow us on Twitter

Check us out on You Tube



Kevin, Gerry and Irene had in house training on kiwi with expert Tony Billings, with members of DOC also



Tony Billings, Gerry Brackenbury, Kevin Saxton and Irene Hamlin

coming in and helping with the training.



Pete Graham DOC with Gerry and Kevin

Kevin and Gerry took a trip out to Limestone Island to release geckos

Husbandry also marked the arrival of our new male ruru / morepork (native owl) who arrived on the 4th April.



Lots of work went into preparing the enclosure for our new morepork, with streamers hanging down the glass of the enclosure to ensure that he did not fly into it and hurt himself.

The 7th April marked the arrival of Kura from Hokitika National Kiwi Centre. Kura is a North Island Brown kiwi and she was born on the 6th October 2006 at Auckland Zoo. Since her arrival Kura and Manuiti have been gradually introduced to each other and were completely integrated on the 10th of June.



Kura is very nosy and likes to know what is going on in her enclosure. She loves to eat meal-worms and to dig her burrow out. The Burrow Cam picture of Kura and Manuiti

digging around in their burrows is another new feature in the Kiwi House for visitors to see live kiwi.

Collections Happenings

Things have been really busy in Collections with a few big projects on the go; the first being the revitalisation of the museum exhibition space. The space has been rearranged to improve the flow and place the displays into more defined groups. The big job was made possible with the help of the families of (and under the watchful eye of) Educator Pippa Lawlor and Collections Manager Karel Kaio. Much work also went into planning the move by Volunteer Anne Juddery in her capacity as a part of the exhibitions planning team.

The change in the exhibition hall coincided nicely with the installation of our **Eels and Ancestors: Stories of Pacific Journeys Exhibition** as part of our Matariki celebrations. The exhibition showcases objects from our Pacific collection in conjunction with eel-related taonga from our Maori collections. Interpretation panels provide scientific eel facts alongside traditional Maori and Pacific tales of the significance of the eel. Live long-finned eel have also been provided by the Mahurangi Institute of Technology and are on display in the Kiwi House.

June 11th saw the opening of the Pacific Journeys exhibition as well as various workshops and demos to celebrate Matariki, the Maori New Year. The day began at 6am with a dawn blessing by Te Komiti member Mr Fred Tito. Breakfast followed with the museum and kiwi house opening to the public at 10am.

Workshops and demonstrations saw local artists Taane Thomas (traditional Maori instrument expert), Wiremu Wilson-Diamond (Maori adze expert), Cassandra Moar (renowned weaver), Dr Tagried Kurwie



(eel expert) and Te Komiti member Koko Heihei (Maori string game expert and poi maker) share their skills and knowledge with our visitors. The day was enjoyed by all and it was a real pleasure to see our exhibition hall come alive.

Other noteworthy Collections news is the donation of a microscope that belonged to Mr Ernest Fairburn whose insect collection we have in our care.



Whangarei Rock and Gemstone Club Inc

Our club held a show in Exhibition Hall, Forum North, on the weekend of 9-10th, July 11.

It is held every two years. The theme this year was Variety Rocks with particular focus on the variety of geology and rocks in Northland and around Whangarei in particular.



Write on!

The "Our Treasures" articles, written by volunteer Anne Juddery, that are published every Tuesday in the Northern Advocate newspaper, keep our profile in the public domain.

The articles include discussion and research of collection objects, the live fauna in the kiwi house and news about the exhibitions we create together.



These articles have a wide following and result in considerable public feedback and response.

Whangarei Native Bird Recover Centre

At the start of the year we had a run of baby morepork, a total of 12.

The very hot weather was the cause of this; all have been released, but the one on the right of the photo, came back after a week in the wild and somehow got back into Sparky's pen!



"Fluffy" still had her eyes shut when we got her, so we guess the bonding was just too strong for her. She was around four days old when she came in.

"Fluffy" is very happy in Sparky's pen. The morepork house that Kiwi North donated to us is now her home.

Principals Meeting

Kiwi North was recently host to the Whangarei Primary Principals' Association. Pippa Lawlor and Anne Juddery shouted them a delicious home-baked morning tea at the Education Centre and afterwards conducted a guided tour of all the facilities at Kiwi North. With nearly 20 Principals in attendance, it was a great opportunity to advertise the Education Service. The President, Adrian Smith, had worked with the extended Education Team during Seaweed

2011 and had nothing but the highest praise for Kiwi North. Principals' were kind enough to consult about a future vision for educational offerings before being left in



peace for the rest of their meeting. Kiwi North has a number of great venues for groups and gatherings of all sizes and all occasions. To book your special occasion, contact Allie Fry-Kewene.

South Rotary funding and working bee

The Education Team was very pleased to receive sponsorship to the tune of \$1050 dollars from Rotary South. The Museum will benefit with a project to provide some innovative interpretation for social history displays.

Three members also got together for a working bee with Educator Pippa Lawlor to make aprons and costumes for the Riponui Pah Schoolroom. This will enhance the heritage experience for visiting primary



Left-Right Rosemary Meyer, Sharon Morgan, Sandra O'Meara, Pippa Lawlor

schools as they will be able to wear period dress while they discover what life was like "back in the day".

Rotarian Laurie Young has also hand-crafted 20 drop spindles to teach children the ancient art of spinning, giving generously of his time and expertise.

Train Club

The Steam and Model Railway Club has been hard at work for the last few years and, as you can see from the main road, is building new track around to Kiwi North Gate 1. It hasn't been without its problems however! The main one was keeping the curve consistent in the rails as the track came around the tight corner from the Kauri station. It has certainly got a lot of motorists' attention!



However, our surveyor, John, got it all under control and we are now away. Hayden has designed a station at the top of the track and the platform is now in place ready to have the track laid into it.

We hope to plant the bank in grasses and flowers with



a little magic twist - but you will have to wait and see !!

That's not all: Brian and Harding have been building a



bogey wagon, and it is now on its wheels and being framed up ready to take the decking.

Meanwhile the model section of the club is taking on a new project - making a new layout in the clubrooms - and hopes to have that started shortly.

Whangarei Model Engineering Club

It's all go at the WMEC site in Heritage Park! The International Convention for Model Engineers is being held on site from January 5th - 9th next year, 2012. It is expected that there could be in excess of 40 model locomotives both large and small coming to grace our tracks. Hence the all-out work to get things really tidied up and all looking smart.

A fair amount of the track has been re-laid with a heavier weight of steel to cater for the modern trend of larger and consequently heavier locomotives. A



completely new traverser (which moves locomotives sideways) has been built and the old one refurbished and turned into a turntable nearby.



The track layout has been changed in places to eliminate some points in the system. This makes for smoother running and lessens the chance of a derailment.

Whangarei Amateur Radio Club

16/17th July

[International Rally of Whangarei 2011 \(NZRC Round 4\)](#)

The International Rally of Whangarei returns to the world-class gravel rally stages around the Whangarei and Kaipara districts for the fifth consecutive year in 2011.

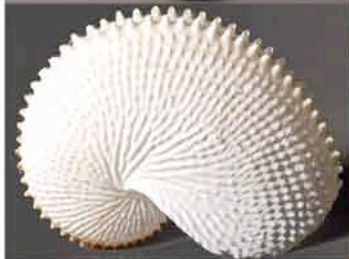


Several teams of club members will be assisting with safety radio communications for the two days. This involves

setting up a portable radio station and reporting the numbers and any incidents of all cars that pass.



Come together...



Come together at Kiwi North to

PLAN Our flexible meeting spaces provide comfortable hospitality away from distractions. Use your time productively to work with business partners or your management team. Brainstorm, team-build or just meet each other in a different setting and create your strong business future.

PLAY Who says work can't be fun? Enjoy one of our informal settings and develop the creativity of your business. Bond as a group, try something new (a bush walk, an art class, meditation or a host of other activities) and develop your potential.

PERFORM Culture & Canapes. What better way to impress your business clients? Relax and let us take care of your visitor hosting. Our unique setting and experiences promise a most memorable occasion. Ideal for product launches, rewards evenings, presentations or just to say "thank you" to the people who work hard for you.

PARTY When you want to let your hair down, you can do so with style. Our venues are perfect for a range of events. With free parking and family-friendly facilities, everyone can have fun! Use our events management expertise and let us organise all those little extras - rides, entertainment, catering - it's all taken care of.

at



Museum • Kiwi House • Heritage Park

Velvet the tuna tapestry - Art for the longfin eel

Several years ago Stephanie Bowman, an artist and science educator from the south-west desert of the United States came to NZ as a traveller longing to experience what she believed to be a land of pristine, healthy waters. But, when she visited the South Island's Lake Rotoiti she found herself falling in love with a mysterious (and sometimes slimy!) fish that revealed to her a different story hidden beneath the surface of our blue waters. "The longfin (eel) is simply amazing", says Stephanie. Back in the Arizona desert after her first trip to Aotearoa Stephanie contacted New Zealand freshwater scientists to learn about these snake-like fish. What she discovered at first shocked her and then awakened in her a strong desire to do something to make a difference for our



endemic and endangered eels. Now, with the help of countless NZ educators, scientists, kids, and friends, a taniwha-sized and growing mixed media and fabric eel has been created for all New Zealanders to not only see, but also to lend their creative hands in helping it grow as long and beautiful as possible before it is carried around the Beehive, displayed at Te Papa, and sailed to Tonga and back, like the eels. Kiwi North will have "Velvet:

The Travelling Tuna Tapestry" on display from **Monday 4th July 2011**. Anyone can

come and see what folks from all over NZ and beyond have crafted with their many hands and one heart.



Designed by Irene Hamlin