



Quarterly Newsletter

March 2011

“Interesting, Fun, Inspiring” Wendy & Ken Bouskill, South Australia

Kiwi North

Each year we host four live day events for the Whangarei community. Live days are themed and activities are planned with the whole family in mind. There’s something for everyone – the Heritage Park Clubs open their doors for visitors to wander in and see the displays of vintage farm machinery, stationary engines, vintage cars and other curiosities such as rocks and gems. Entrance to the Park costs just \$10 per adult; this includes parking and entrance to the new Kiwi House and the Museum. Children under 16 years get in free. The Clubs operate most of the rides; this is their opportunity to raise funds for development projects such as railway line extensions.



This month’s Live Day features *Medieval Madness*. Activities will take place throughout the Heritage Park. The main entrance for our Live Day is via Gate 2.

Capital Development Projects continue at Kiwi North both here at the Museum and Kiwi House and with each of the 13 Clubs that are resident on the Heritage Park grounds. As a not-for-profit organisation we value the input from our volunteers, Club members and community representatives.

On 21st January a dawn blessing was held to ensure the safe transition of the live fauna from their old enclosures on the Heritage Park grounds to their new enclosures. Special thanks to our Te Komiti members for facilitating the ceremony and to Te Puni Kokere for covering the costs for the catering.



Dawn Blessing

The doors to new Kiwi House were opened to the public by Mayor Cutforth on 31st January; over 3,000 visitors took advantage of the festivities which included a live Big Band concert.



Currently on display are Manuiti the kiwi, a morepork and a variety of gecko, including the incredibly vibrant Auckland Green and the very large Duvaucel’s. Another kiwi is in the process of being relocated from Hokitika and we hope to receive a second morepork from Otorohanga. We’ll let you know when they arrive. The new Kiwi House building can be accessed via Gate 1 on State Highway 14.

Opening of New Kiwi House Monday 31 January 2011

Mayor Cutforth
&
Mr Kelvin Davis



Up-coming Events

Wednesday 18th May
International Museum’s Free Day



Saturday 11th June
Matariki Festival

Celebrate the eel, with demonstrations, talks and music.



Live eel display at the Kiwi House and new exhibition at the Museum featuring objects from the Maori taonga and Pasifika collections.

Monday 13th - 17th June
- Top Art, NZQA art portfolios



Volunteers are vital to this organization and we’d love to have more! We still have vacancies in the following areas:

- visitor hosts
- grounds maintenance
- gardening
- archives and research
- collections management
- public programmes and events e.g. catering, tour guides
- housekeeping
- husbandry

If you’re interested in history, heritage, conservation or live fauna then we’re the place for you. We’re looking for old and young volunteers who are able to work half-days.

Contact the: Director, Kiwi North, P.O. Box 10135, Te Mai, Whangarei 0143 or phone for more details.



Welcome to our fabulous new shop!

The front of house staff and visitors alike are really enjoying the colourful new environment of the new Kiwi North reception area, which includes a beautiful new shop. Kevin and Allie had fun setting out this new retail area and continue to add to the range. We stock a wide mix of kiwiana gifts including jewellery, toys and puppets, t-shirts and hats plus much more. The books for children are fantastic and include those by local authors and illustrators. Our goal is to include as many beautiful local and New Zealand made products as possible. So if it is for overseas, home or simply a treat for yourself, you will find that perfect special something in the Kiwiana shop at Kiwi North.



Special thanks to our project sponsors

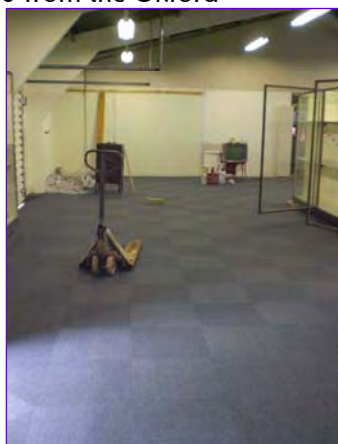
- Oxford Sports Trust – \$10,000 towards carpeting the Education Centre and a further \$4,900 for a high tech microscope for school children to utilize
- ASB Community Learning – \$10,000 travel subsidy for schools participating in LEOTC activities
- Mangakahia Lions – for building a protective fence near the museum
- A.K Franks Trust, Rotary Club of Whangarei -\$300.00, and WDC Creative Communities, \$2,100.00 contribution towards the June Matariki Festival
- Te Puni Kokere – \$500 contribution for catering for the Dawn Blessing ceremony for the live fauna on 21st January 2011 and the opening of the new kiwi house on 31st January 2011.

Education Centre refurbishment

A generous donation of \$10,000 from the Oxford Sports Trust has enabled the Education Centre to be fully carpeted. As well as providing a much better surface for visiting school groups, this will also help to insulate the building and retain heat. The flooring surface has been especially chosen for its durability and longevity, and should withstand the roughest treatment even moving transport collection items over it!

Board member Geoff Thomas assisted with moving the display cabinets to allow flooring to be laid underneath and Pearce Carpets did an excellent job in fitting the tiles to the unusually-shaped building.

The new-look Education Centre has been redecorated by Educator Pippa Lawlor with volunteer assistance from husband John and features a new Pioneer NZ area where school groups can step back in time and do some old-style baking.



Carpet in Education centre



Giant Whale Puppet

Sea week 2011

On March 3rd as part of the annual SeaweeK celebrations over 120 children met at One Tree Point School to take part in a day of activities and entertainment organized by Pippa Lawlor and an enhanced Kiwi North Education Team.



As LEOTC Educator for Kiwi North Pippa works with 6 museums in the Whangarei District to provide learning experiences outside the classroom.



SeaweeK was an opportunity for schools to come together as a community and celebrate our culture, history and traditions of the sea (the SeaweeK theme for 2011) by taking part in individual challenges, team activities and group events.

Children engaged in such diverse things as being a giant whale puppet, sending semaphore messages, identifying mystery objects from sea-themed collection items and learning how to protect our sand dunes. The emphasis was hands-on activities and children even had a pirate-themed treasure map to guide them around the challenges on the day- collecting treasure 'stamps' for each successful completion.



Participating in a variety of science, arts, technology and drama workshops were Kiwi North, Claphams Clocks, Waipu Museum, Coastal Care, environmental educators from Northland Regional Council and NZAEE and Mrs. Gillian Cutforth. Hikurangi Museum and Whangarei Art Museum weren't able to be there in person but provided displays for the day.

SeaweeK at One Tree Point School was a very positive experience with schools from One Tree Point, Ruakaka, Raurimu, St Francis Xavier, Maungakarama, Portland, Paura Bay and Otaika Valley taking part.

Schools were invited to leave a 'message in a bottle' on the notice board for their comments, and feedback has been overwhelmingly enthusiastic and positive from children and teachers alike.

Education Team

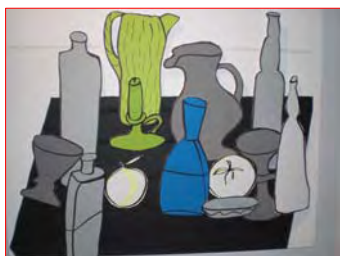
Although the start of Term 1 is traditionally quiet, Kiwi North has seen an influx of visitors from nearby Maunu School, all keen to see the



kiwi in his new home. Children have enjoyed the many interactive activities in the new nocturnal house including the very puzzling tessellating lizards game!



Elsewhere, Pippa Lawlor has been busy guiding workshops at the Ann Verdcourt exhibition at Whangarei Art Museum. A successful teacher's preview evening showcased what was available.



Paura Bay School were just one of many schools who visited and had fun arranging themselves into a sculpture based on one of Ann's works before trying their hand at still life composition.

Interpretation workshop

National Services Te Paerangi ran a very successful one-day workshop on the topic of interpretation and label writing in February. The newly refurbished Education Centre was a comfortable and self-contained venue for the delegates who came from Auckland and throughout Northland.

Variety Bash

The **Variety Bash** is an annual week long event that travels through different parts of New Zealand. The **Bash** is a **parade of wacky, colourful,**



wonderful vehicles carrying people who are committed to the fundraising ethos and focused on having fun along the way. Kiwi North was proud to play host to the **Bash** on Wednesday 9th March where staff and volunteers served up a delicious breakfast for the **Bashers**. Children from Maunu Health Camp joined in some face-painting

PARK OVER PROPERTY

We welcome members of the POP organisation for a maximum of three nights - \$15 per night. Dogs are welcome but must be kept on a leash. Gates are locked between 4.30 pm and 9am. Toilets and showers are available.

For more information and enquires about booking Contact Allie. Phone 09 438 9630 Email admin@kiwinorth.co.nz



and other fun and games organised by the Education Team. This year the funds will go to help children affected by the earthquake in Christchurch.

18 May International Museum's Free Day 2011

This is the day when museums throughout the world throw open their doors and offer free entry to the public. It has always been a very successful event for Kiwi North and runs alongside special events for schools.

This year's theme is 'Museum and Memory'.

The Education Team will be organizing a whole series of events and activities for primary and secondary schools to take place during the week of 16th-20th May. During this time, teachers will be able to bring their classes to Kiwi North for free. Booking is still essential and can be made, as usual, through the Education Centre. E-mail: education@kiwinorth.co.nz or Phone: 09 438 9630 ext 704



Collections Happenings

The Butterflies Returning touring exhibition was de-installed at the end of Sept 2010 and was changed over for our Summer themed exhibition Sun, Sea and Sandflies. Consisting of a display of stunning images and a selection of textiles, the display closed March 20th.



The bulk of tasks undertaken between October 2010 and January 2011 focussed primarily around preparations for the opening of our new kiwi house featuring a kahukiwi (kiwi feather cloak) and natural history displays. The highlight of the natural history displays being the inclusion of two, (male and female), extremely rare (and now extinct) huia specimens.

Become a Friend of Kiwi North

Did you know?
For the cost of just **TWO VISITS**
You can enjoy
Unlimited Visits to Kiwi North
FREE ENTRY on Live Days
Quarterly Newsletters



For further details:

Phone: 09 438 9630 Email: admin@kiwinorth.co.nz



The huia were expertly restored by Peter Wells, a Blenheim based Taxidermist.



We have also had a very significant donation of a bible, believed to have belonged to the first recorded Whangarei European settler, William Carruth, from the Whangarei District Council. The bible was donated to the WDC by a Carruth descendent.

Karel Kaio (Collections Manager/Conservator) recently provided outreach assistance to Te Papa Tongarewa and the Whangarei Central Library,



through Kiwi North, in her capacity as a trained and qualified Objects Conservator. This is a new service that we will be providing organisations and individuals as time permits.

Our resident Archivist/Historian Mim Ringer is currently involved in an interpretation project with the WDC that involves the identification of historically and culturally significant sites along Hatea Drive.

Plans for the near future include a tuna (eel) themed Matariki display accompanied by guest speakers and demonstrations of traditional arts on show at an open day on June 11.

Kiwi North is on Facebook!

<http://www.facebook.com/pages/Kiwi-North/108826625820626>

will link you to our news site. Find out what we were up to for Seaweek and see our fabulous Monarch butterfly photos.

<http://www.facebook.com/pages/Kiwi-North/279829317243>

Will link you to our captive kiwi resource site. Lots of pictures about kiwi- great for projects! See how we microchip kiwi that come into bird recovery before they are released back into the wild.

Check out our films on You-Tube. Look for "Raiders of the Lost Archives" and see behind-the-scenes as we prepare specimens for exhibitions.

Manuiti is also on Twitter!

Find us on
Facebook

Follow us on
Twitter

Check us out
on YouTube



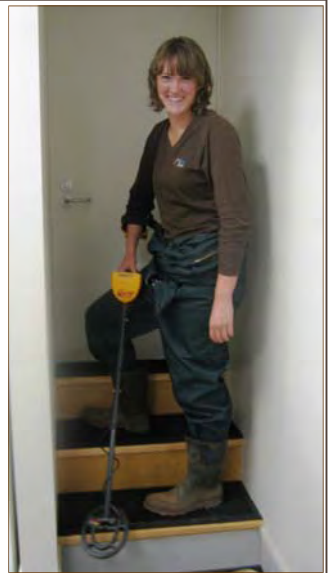
Volunteers

A huge amount of effort went into the preparations and move to the new kiwi house and we couldn't have done it without the help of volunteers.

A special thank you to Mark Dudley and Marina Adams for helping the husbandry team. Mark brought his trailer and tools, moved equipment, moved and removed signs, and much more. Marina donated about 200 hours of her time and carried out jobs as diverse as collecting grass for the locusts, feeding the chooks and the peacock, helping to metal detect the soil in the kiwi enclosure, watering and potting up plants, painting, and running the barbeque on the opening day.

Board member Geoff Thomas put in a huge amount of work throughout the project and Board members Councilor Sharon Morgan and John Williamson weeded the new tree plantings carried out by Mangakahia Lions last winter. Thanks to all of our many helpers, I know I haven't mentioned you all by name, but we couldn't have done it without you!

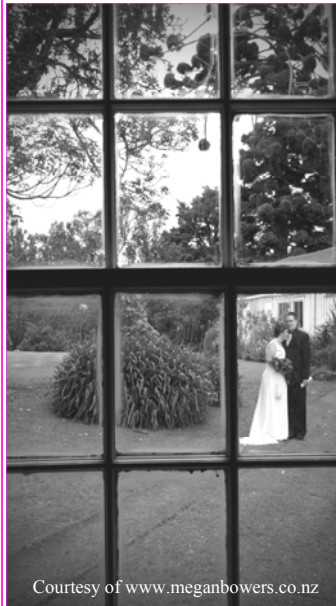
Elizabeth Adams, (Husbandry Officer)



Volunteer Marina Adams on stairs to Kiwi enclosure with metal detector

VENUE HIRE — Weddings

The magnificent grounds, historic buildings, unique photographic opportunities and friendly, relaxed atmosphere of Heritage Park provide the perfect place for your wedding. Your family and guests will enjoy wandering the beautiful grounds.



Courtesy of www.meganbowers.co.nz

We offer a stunning ceremony and / or photographic venue with mature parkland, native bush and a village green. Distant views of Whangarei Heads and heritage buildings provide extraordinary photo opportunities.

The Clarke Homestead, an octagonal kauri chapel, school house, rustic blacksmiths shop, railways and even a jail house are a photographers dream.

Contact Allie to arrange a visit and bookings.

Email admin@kiwinorth.co.nz

Ph. 09 4389630

Designed by Irene Hamlin

500 State Highway 14, Maunu. PO Box 10135 Te Mai 0143 Whangarei Northland New Zealand.

Phone: +64 09 4389630 / Fax: 09 4308462 www.kiwinorth.co.nz